

Eastern Police Area

Our next two meetings in the Eastern Police Area are:-

Monday 11 January 2010
CANCELLED

Thursday 21 January 2010,
7pm

Rescheduled to:-
Monday 1 February 2010
7pm

Civic Hall, Market Street,
Nantwich, CW5 5DG

Methodist Church Hall,
Off King Edward Street,
Macclesfield, SK10 1BX

Please come along to either meeting or both.

- 1. Policing Priorities & Budget 2010/11 – You said, we did**
The results from the Authority's public consultation on the community's priorities for policing and the proposed Chief Constable's objectives are attached at Appendix 1. The budget proposals will be outlined at the meeting.
- 2. Custody Visiting Scheme**
Custody Visitors will discuss their role in visiting people detained in police cells.
- 3. Policing in the Eastern Area**
Chief Superintendent Mick Garrihy will discuss policing in the Area. Details of crime levels and performance and notable incidents are attached at Appendix 2.
- 4. Question Time**
Your opportunity to question the Authority and senior Police Officers.

Newsletters are published after each cycle of meetings which provided a summary of the matters discussed and questions asked. Copies are available at www.cheshirepa.police.uk or tel: 01244 614004.

POLICING PRIORITIES: CONSULTATION RESULTS

During October and November 2009, the Authority consulted with the public about their priorities for policing for the forthcoming year. Consultation was carried out in a variety of ways:-

Roadshow

The Authority met the public in eight town centres across the policing area of Cheshire.

Postal Surveys

Postal surveys were sent , with second class reply paid envelopes to:-

- 'Have Your Say' regular attendees;
- Custody Visitors;
- Borough Councillors;
- Local Authority Chief Executives;
- Crime and Disorder Reduction Partnerships;
- Diverse groups; and
- a citizen's panel of people who volunteer to take part in surveys.

Web Survey

People were encouraged to complete the survey on the web site through the local press.

1,927 people responded to the survey. The number of responses means that the results are statistically significant. 52.5% of respondents were female, 47.5% male.

HEADLINE RESULTS

- 1,238 (65.3%) respondents felt that Cheshire Constabulary do an excellent or good job.
- 55% agreed (strongly & tend to) that the police are dealing with anti-social behaviour and crime issues in the area, compared with 54% when asked about the police *and* council.
- 44% agreed (strongly & tend to) that they can influence decisions in their local area.

The survey asked people to say whether they felt the following areas of policing were essential, important or a lower priority.

	Policing in order of priority
1	Responding to emergency calls
2	Tackling violent crime
3	Detecting crime and arresting offenders
4	Tackling organised crime and terrorism
5	Targeting drug dealers
6	Tackling domestic and child abuse
7	Tackling ASB
8	More officers in the community
9	Reducing Paperwork
10	Protecting witnesses
11	Focusing on burglary and vehicle crime
12	Making better use of money and staff
13	Keeping victims informed
14	Improving road safety
15	Working with schools
16	Providing crime prevention advice
17	Tackling community problems

The top 5 areas described as “essential” in each Council area are:-

	Halton	Warrington	Cheshire East	Cheshire West & Chester
1	Responding to emergency calls	Responding to emergency calls	Responding to emergency calls	Tackling violent crime
2	Detecting crime and arresting offenders	Tackling violent crime	Tackling violent crime	Responding to emergency calls
3	Tackling violent crime	Tackling organised crime and terrorism	Detecting crime and arresting offenders	Detecting crime and arresting offenders
4	Targeting drug dealers	Detecting crime and arresting offenders	Tackling organised crime and terrorism	Tackling organised crime and terrorism
5	Tackling organised crime and terrorism	Tackling domestic and child abuse	Targeting drug dealers	Targeting drug dealers

PROPOSED POLICING OBJECTIVES 2010/11

The Authority has used these results along with the national priorities set by the Home Secretary, policing intelligence and local priorities to prepare the following draft policing objectives for the Chief Constable for 2010/11. Targets and measures to assess achievement of the objectives are being developed.

OBJECTIVE 1 - Increase public confidence in policing

OBJECTIVE 2 - Respond effectively to the public when in need

OBJECTIVE 3 - Prevent and address anti-social behaviour and disorder to maintain safe and strong communities

OBJECTIVE 4 - Prevent and investigate crime

OBJECTIVE 5 - Protect vulnerable people

OBJECTIVE 6 - Protect the public from serious and organised crime and terrorism

OBJECTIVE 7 - Optimise value for money by improving efficiency and reducing costs

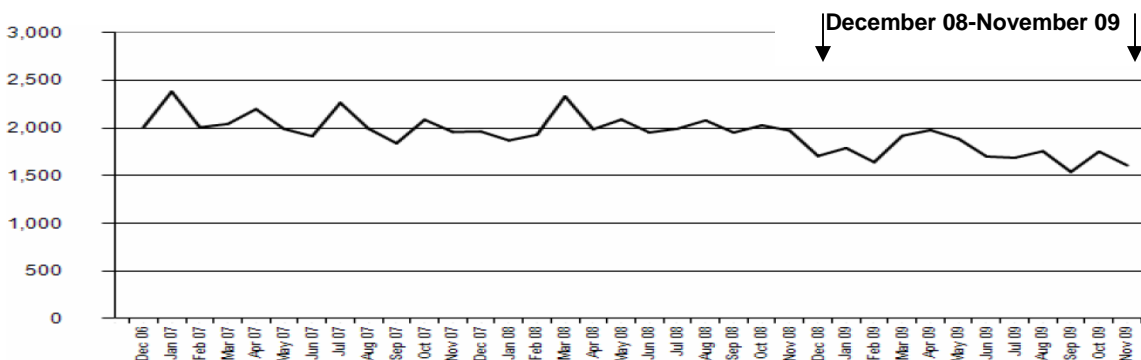
Mark Sellwood
Chief Executive

PERFORMANCE DATA & RECENT ACTIVITY

Crime

For the period December 2008 - November 2009 compared to the same period the previous year, crime in the Eastern Area is down by 13% (3,179 fewer crimes). In Cheshire as a whole, crime is down by 11% (8,139 fewer crimes).

Total crime in Eastern Area



Performance in relation to a number of key crime categories over the year is:

Domestic Burglary	Up 20%	211 more crimes
Violent Crime	Down 6%	283 less crimes
Vehicle Crime	Down 21%	573 less crimes
Criminal Damage	Down 17%	927 less crimes

Detections

The overall detection rate in the Eastern Area, for the period is 26.5%. This compares to a rate of 27.7% for the same period the previous year. Other detection rates include:-

	<i>This year</i>	<i>Last year</i>
Domestic Burglary	21.0%	29.8%
Violent Crime	42.9%	47.3%
Vehicle Crime	12.0%	13.0%
Criminal Damage	14.1%	14.4%

Anti-Social Behaviour Incidents

During 2009, there were 19,037 incidents of Anti-Social behaviour recorded in Eastern Area, compared to 18,901 in 2008, an increase of 0.7%.

The most recent comparative data, which compares Eastern Area with other similar policing areas, shows performance equating to 12.792 incidents per 1,000 population, broadly in line with the average of 12.459. Overall, the force recorded a total of 60,930 incidents during 2009, an increase of 4.2% over 2008.

Public Confidence and Satisfaction

In the most recently available data from the British Crime Survey (June 2009) the percentage of the Cheshire public who stated they had confidence in their local police was **51.4%**. The percentage of the public who were satisfied with the whole experience of the service received from the police for the year ending September 2009 was 88.9% for the force and **90.6%** for the Eastern Area.

RECENT ACTIVITY AND INCIDENTS OF NOTE

More cannabis farms have been closed. Officers seized thousands of plants in houses at Nether Alderley, Mere, Siddington, Alsager and three separate addresses in Crewe. Several arrests were made and the plants, which would have added to the illegal drugs trade on the Area's streets were destroyed. Organised criminal gangs based in the Far East are linked to some of these "farms" and investigations are continuing.

A 20 years old man from Congleton was sentenced to 21 months in a Young Offenders Institution after admitting possessing cocaine with intent to supply, and possessing cannabis. He was arrested in market Street, Congleton by officers carrying out ArcAngel patrols.

Two men have been committed to Chester Crown Court charged with possession of heroin and cocaine with intent to supply. They were arrested when a Police patrol stopped their car in Crewe.

A judge congratulated a team of Police Officers who pieced together a "comprehensive and compelling picture" of farm machinery thefts across East and West Cheshire. Judge Nicholas Woodward told eight men who appeared for sentence at Chester Crown Court, "These offences had all the hallmarks of professional and lucrative crime executed with planning, foresight and determination". Four of the men were sent to prison, three others received suspended prison sentences with unpaid work and the other offender was made the subject of a Community Order.

A concentrated publicity campaign to encourage people to lock up was conducted across Eastern Area following a rise in the number of sneak-in burglaries. In Congleton, officers introduced a "benign burglar" operation; trying doors late at night and alerting the occupiers whenever they found a house unlocked. One in three burglaries in Cheshire Police Eastern Area was currently a sneak-in.

A 36 year old man who admitted more than thirty sneak-in burglaries in Crewe was sent to prison for four years and three months. Several other prolific burglars were arrested. One man who broke into thirty homes in Crewe was sent to prison for four years.

All Neighbourhood Policing Units across the Area carried out operations to combat town-centre crime during the run up to Christmas. Police Officers in uniform and Police Community Support Officers provided a visible presence while officers in plain clothes looked for shop lifters, purse dippers and thieves specialising in vehicle crime. Many of the Area's prolific shoplifters were arrested.

A 30 year old man will be sentenced in January for the manslaughter of Neil McDonald in Macclesfield after pleading guilty to the charge at Chester Crown Court. The court was told that Mr McDonald died from the effects of a single punch after he was attacked in the street while walking home.

Two men were sentenced to a total of 35 years in prison after being convicted of the murder of Rodney Marsh, who was found battered to death in woodland at Alderley Edge. The Judge at Chester Crown Court said it had been a “sustained and ferocious attack”. Police Officers used mobile 'phone records to establish that the two men and the victim were in the area of the murder scene on the morning of the attack, and that one of the two accused was having an affair with Mr Marsh's partner. One of the men was sentenced to 18 years imprisonment, the other to 17 years.

A man was sent to prison for eight years for stabbing another man in front of a group of people in Crewe. The man pleaded guilty to a charge of wounding with intent.

The use of Restorative Justice (RJ) to deal with offenders in appropriate cases is developing further. Ten RJ conferences were organised following incidents of graffiti and vandalism in Macclesfield town centre, followed by sessions of “clean up” work by the offenders. Seven teenagers who admitted being responsible for graffiti on a play park at Knutsford also cleaned up the mess, attended a meeting and then wrote open letters of apology to the people of Knutsford.

Special weekend “Rural Patrols” are being carried out by Nantwich Neighbourhood Policing Unit. PC Sarah Mawson and PCSO Sharon Jones tour villages in a rural contact bus, giving people a chance to call in and talk about any issues they have.