

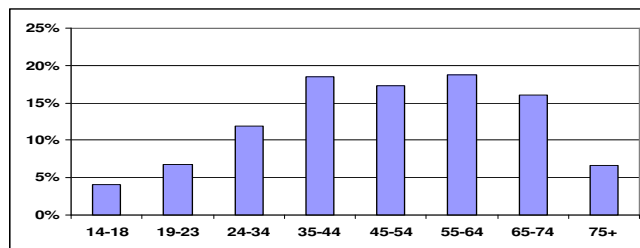
POLICING PRIORITIES: CONSULTATION RESULTS 2010

1. During March and September 2010 the Authority consulted with 1971 members of the public about their priorities for policing and about policing services.
2. The consultation took place at:-
 - eighteen “road-shows” during which Members, Authority staff, police officers and PCSOs carried out face to face surveys with the public.
 - Public events such as Cheshire Show, Halton Show and the Constabulary Open Day.
 - Mailing lists including the Citizen’s Panel, Custody Visitors and public meeting attendees.
 - focus groups including:-
 - Crewe Bangladeshi Women’s Welfare Association;
 - Organisation Caring for ethnic and all nations
 - residents groups in East Cheshire
 - survivors of domestic abuse
 - ‘New Deal’ groups for unemployed people in Northwich and Warrington; and
 - adult learners in Cheshire West and Chester.

HEADLINE RESULTS

3. Overall, 1971 people responded to the survey 56.9% were female, 43.1% were male.

The age of respondents, as a percentage of the total, breaks down as follows:-



4. The results show that the top 5 areas described as “essential” are:
 - responding to emergency calls
 - tackling violent crime
 - detecting crime and arresting offenders
 - tackling organised crime and terrorism

- tackling domestic and child abuse
5. During 2010, 1971 people were surveyed in total, As an indicator of change in opinions; tackling violent crime and detecting crime and arresting offenders have swapped places in order of priority. Targeting drug dealers has moved up from 6th to 5th position and tackling domestic and child abuse has fallen from 5th to 6th position.
6. During the September 2010 Roadshows, respondents were asked to consider themselves allocating the police budget and to think carefully about what they considered to be a lower priority. The five most common areas were:-
- Tackling community problems, which when clarified was considered to be the role of the local Council;
 - Reducing paperwork;
 - Providing crime prevention advice;
 - Improving road safety; and
 - Working with schools

		Policing Priorities January – December 2010			
		Essential	Important	Lower Priority	Total
1	Responding to emergency calls	89.8%	9.9%	0.3%	100%
2	Tackling violent crime	86.7%	12.9%	0.4%	100%
3	Detecting crime and arresting offenders	83.6%	15.9%	0.5%	100%
4	Tackling organised crime and terrorism	82.0%	15.6%	2.4%	100%
5	Tackling domestic and child abuse	77.4%	20.1%	2.4%	100%
6	Targeting drug dealers	76.7%	21.3%	2.0%	100%
7	Tackling ASB	65.3%	31.4%	3.2%	100%
8	More officers in the community	63.6%	32.1%	4.3%	100%
9	Protecting witnesses	56.0%	38.0%	5.9%	100%
10	Focussing on burglary and vehicle crime	55.9%	41.3%	2.8%	100%
11	Reducing Paperwork	50.0%	30.8%	19.2%	100%
12	Making better use of money and staff	48.9%	42.6%	8.5%	100%
13	Keeping victims informed	38.1%	50.3%	11.7%	100%
14	Improving road safety	31.9%	49.7%	18.4%	100%
15	Working with schools	30.0%	52.1%	17.9%	100%
16	Providing crime prevention advice	21.9%	51.4%	26.7%	100%
17	Tackling community problems such as parking, graffiti, damage	17.8%	49.6%	32.6%	100%

7. 1336 (68.5%) of respondents felt that Cheshire Constabulary do an excellent or good job, compared to 65% in 2009.
8. 64% agreed (strongly & tend to) that the police are dealing with anti-social behaviour, and crime issues in the area compared with 55.2% in 2009, an increase of 8.8%. In contrast 52.6% agreed (strongly & tend to) that the police *and* council are dealing with anti-social behaviour and crime, a fall of 1.4% of compared with 2009 (54%).
9. 38% agreed (strongly & tend to) that they can influence decisions in their local area, a decrease of 6% compared with 2009.

RESULTS BY AREA

10. The top 5 areas described as “essential” are illustrated in the table below.

	Cheshire East 2010	2009	Cheshire West & Chester 2010	2009	Halton 2010	2009	Warrington 2010	2009
	<i>535 respondents (28.4%)</i>		<i>596 respondents (31.7%)</i>		<i>319 respondents (17.0%)</i>		<i>431 respondents (22.9%)</i>	
1	Responding to emergency calls	Responding to emergency calls	Responding to emergency calls	Tackling violent crime	Responding to emergency calls	Responding to emergency calls	Responding to emergency calls	Responding to emergency calls
2	Detecting crime and arresting offenders	Tackling violent crime	Tackling violent crime	Responding to emergency calls	Tackling violent crime	Detecting crime and arresting offenders	Tackling violent crime	Tackling violent crime
3	Tackling violent crime	Detecting crime and arresting offenders	Detecting crime and arresting offenders	Detecting crime and arresting offenders	Tackling domestic and child abuse	Tackling violent crime	Detecting crime and arresting offenders	Tackling organised crime and terrorism
4	Tackling organised crime and terrorism	Tackling organised crime and terrorism	Tackling organised crime and terrorism	Tackling organised crime and terrorism	Detecting crime and arresting offenders	Targeting drug dealers	Tackling organised crime and terrorism	Detecting crime and arresting offenders
5	Tackling domestic and child abuse	Targeting drug dealers	Tackling domestic and child abuse	Targeting drug dealers	Tackling organised crime and terrorism	Tackling organised crime and terrorism	Targeting drug dealers	Tackling domestic and child abuse

11. The results for the National Indicator (NI) questions by Borough Council area are:-

% of people who strongly or tend to agree that:-	Cheshire East		Cheshire West & Chester		Halton		Warrington	
	2010	2009	2010	2009	2010	2009	2010	2009
They can influence decisions in the local area (NI 4)	36.2% (117 out of 323)	41.9% (271 out of 647)	42.8% (127 out of 297)	41.6% (326 out of 784)	45.8% (i.e. 44 out of 96)	51.6% (65 out of 126)	32.2% (99 out of 307)	51.5% (137 out of 266)
The police and council are dealing with anti-social behaviour and crime issues (NI 21)	51.5% (159 out of 309)	50.9% (327 out of 642)	53.2% (157 out of 295)	54.5% (428 out of 786)	62.1% (59 out of 95)	42.7% (53 out of 124)	49.8% (152 out of 305)	63.7% (167 out of 262)

KEEPING PEOPLE INFORMED

12. Overall, 33.8% of people said that they know how well the police are performing in their local area, compared to 36.9% in 2009.

Top 5 methods of receiving information	How People would like to be kept informed
Local newspapers (50.7%)	Newsletter through door (50.2%)
Newsletter through door (48.0%)	Local newspapers (48.0%)
News programmes on TV/Radio (23.0%)	Information in public places (29.3%)
Word of mouth (20.2%)	News programmes on TV/Radio (24.0%)
Speaking to your neighbourhood officers (13.3%)	Speaking to your neighbourhood officers (23.2%)

LOCAL PRIORITIES

From July 2010, the following question was added to the survey; "If you could identify just ONE priority for police action within your local area, what would this be?" The top 5 priorities mentioned were:-

1. Anti-Social Behaviour (General)
2. Police Officer visibility
3. Tackling drug users/drug dealers
4. Vehicle related Anti-Social Behaviour (Speeding, Parking)
5. Youth/Gang related Anti-Social Behaviour

LOCAL PUBLIC PRIORITIES

Since the launch of the new Constabulary website in May 2010, each Neighbourhood Policing Team has published a monthly list of two or three priorities and provides a 'you said, we did' narrative on the work being done to address the issues raised by the public through a variety of means such as public meetings, surgeries, walking the beat, residents groups and local intelligence.

The most frequently used phrases or key words in the published local priorities from May to November 2010 are as follows:-

RANK	PRIORITY	NO OF MENTIONS	RANK	PRIORITY	NO OF MENTIONS
1	Anti-social Behaviour	424	6	Underage drinking	47
2	Speeding	131	7	Drug dealing	46
3	Traffic offences	109	8	Drug taking	41
4	Parking	101	9	Burglaries	28
5	Drinking	71	10	Criminal damage	28

By area, the top five published local priorities for the six month period are:-

	WESTERN	EASTERN	NORTHERN
1	Anti-social Behaviour	Anti-social Behaviour	Anti-social Behaviour
2	Parking	Speeding	Traffic offences
3	Speeding	Traffic offences	Speeding
4	Underage drinking	Parking	Drinking
5	Traffic offences	Drinking	Parking